



30

Creative Wedding Color Schemes 2020



Your
Color
Style

Introduction

Hello! I'm Jen Thoden and I'm so glad you're here.

As you already know, color is a huge part of designing your wedding. The color scheme drives every decision from bridesmaid dress colors to flowers to table accessories. It may even drive the Mother's dresses and the groomsmen's suits.

I love color. I believe, to my core, that color is foundational to your mood, to the clothes you wear and the environments that inspire you.

The bridesmaid dress colors are key to a wedding color scheme. It's the color that surrounds the bride in all the photos. So, getting the bridesmaid dress color right is really important. Plus, the bride wants a color scheme that reflects her personality.

I've curated 30 creative wedding color schemes to inspire you. Each page will have a photo, a color palette and notes on the color palette. You'll learn how the color palette was created and the mood the color palette conveys.

The next couple of pages will show you, step by step, how to create your own color palette using the color wheel. Then, you can browse the 30 color schemes to see if any catch your eye.

I hope this guide inspires a creative color scheme for your wedding.

Please visit YourColorStyle.com to learn more about color and the types of colors that will flatter you best.

Take the color analysis quiz at: <https://yourcolorstyle.com/quiz>

Enjoy!

HUGS

Jen Thoden



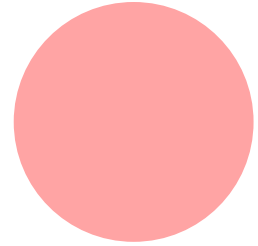
YourColorStyle.com

How To Create A Wedding Color Palette

Creating your own custom color palette is fun and easy. All of the color palettes in this guide were created with the exact steps I'm about to share with you. I'm going to be describing this step-by-step process to you in terms of designing a wedding color scheme, but you can use this same process to create stylish outfits and home decor color palettes. Let's get started!

Step 1. Start with the bridesmaid dress color

When creating any color palette, you start with a main color. The bridesmaid dress color is the main color of the wedding. It is the color that surrounds the bride in almost every photo. For this example, we'll use blush pink as the main color.



Step 2. Choose the color scheme type

The type of color scheme you choose will convey different moods and personality.

Note: brighter colors and/or higher contrast will create higher energy in your color palette.



Monochromatic: Tints and shades of one hue

Mood: Simple, Elegant

Example 1



Example 2



Analogous: Colors that are next to each other

Design tip: Choose one color as the dominant color and 2 other colors as accents.

Mood: Sophisticated, Trendy

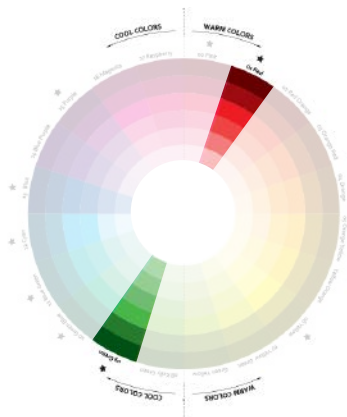
Example 1



Example 2



YourColorStyle.com



Complementary: 2 colors opposite each other
Design tip: This works well with brighter colors.

Mood: Dynamic, Vibrant

Example 1



Example 2



Triad: 3 colors that are equidistant from each other
Design tip: Choose one color as the dominant color and 2 other colors as accents.

Mood: Fun, Exciting

Example 1



Example 2



Complementary: 2 colors opposite each other plus the colors next to them.

Mood: Energetic, Confident

Example 1



Example 2



Tetradic: 2 sets of complementary colors
Design tip: Choose one color as the dominant color and 3 other colors as accents.

Mood: Bold, Creative

Example 1



Example 2



YourColorStyle.com

Order Your Color Wheel

Use the Your Color Style color wheel to easily create custom color palettes.

Point the Main Color arrow to the main color. This could be the bridesmaid dress, the main color of your outfit or the main color of your interior.

Then select your colors based on the color combination you want. Make sure your main color consists of at least 60% of the color scheme and the other colors are accents.

Shop your color wheel here: <https://yourcolorstyle.com/product/bright-color-wheel-2/>



YourColorStyle.com



Dress Color: Teal

Who wears it best: Everyone

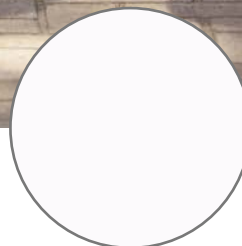
Color Combination: Split Complementary

Brightness: Soft

Mood: Calm, Romantic



YourColorStyle.com



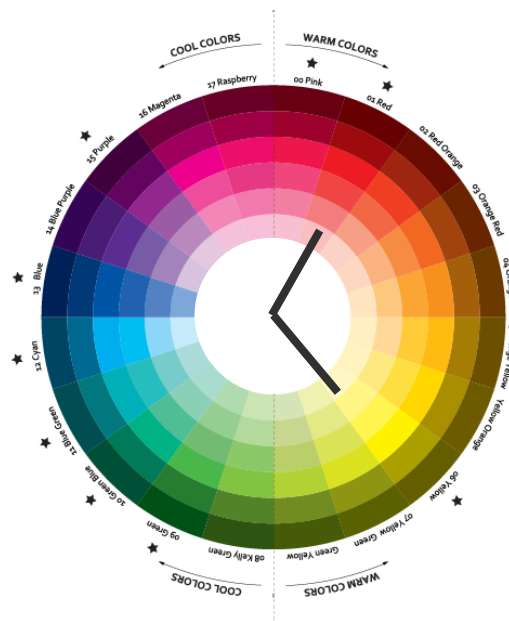
Dress Color: Blush Pink

Who wears it best: Everyone

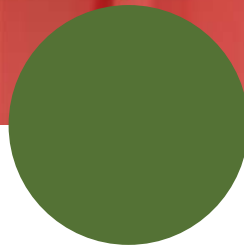
Color Combination: Triad

Brightness: Bright

Mood: Feminine, Romantic



YourColorStyle.com



Dress Color: Coral Pink

Who wears it best: Everyone

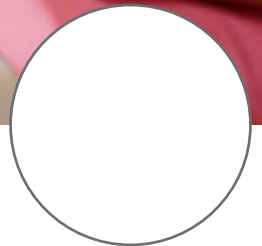
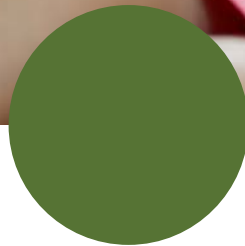
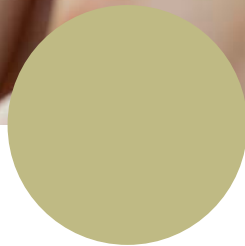
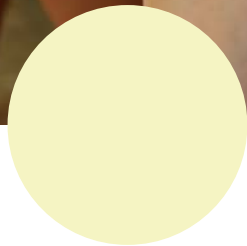
Color Combination: Analogous

Brightness: Bright

Mood: Bright, Positive



YourColorStyle.com



Dress Color: Coral Pink

Who wears it best: Everyone

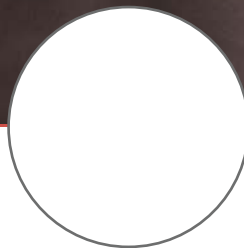
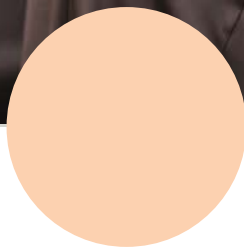
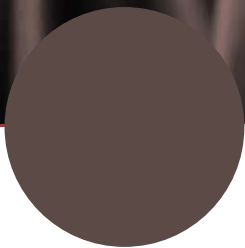
Color Combination: Triad

Brightness: Bright

Mood: Bright, Positive



YourColorStyle.com



Dress Color: Medium Taupe Brown

Who wears it best: Everyone

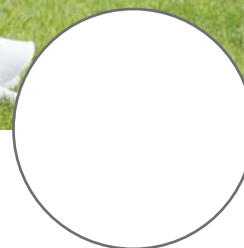
Color Combination: Analogous

Brightness: Bright

Mood: Elegant, Simple



YourColorStyle.com



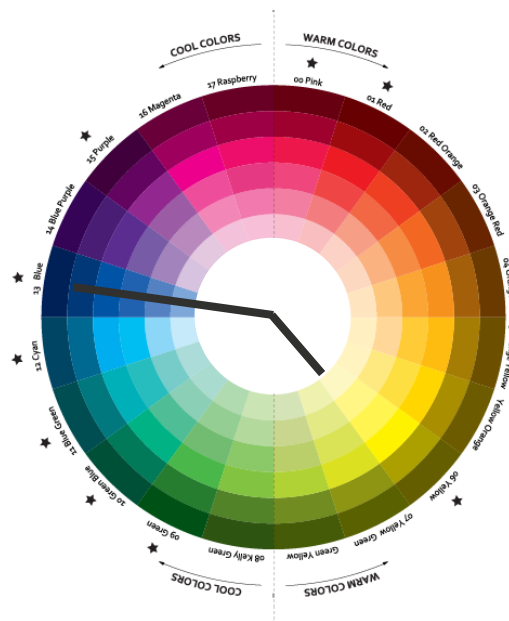
Dress Color: Navy Blue

Who wears it best: Everyone

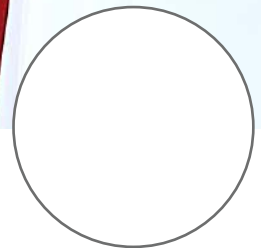
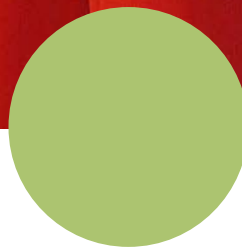
Color Combination: Triad

Brightness: Bright

Mood: Loyalty, Order



YourColorStyle.com



Dress Color: Tomato Red

Who wears it best: Bright & Warm

Color Combination: Analogous

Brightness: Bright

Mood: Bold, Passionate



YourColorStyle.com

What Colors Look BEST On You?



<http://YourColorStyle.com/quiz>



YourColorStyle.com



Dress Color: Mint

Who wears it best: Everyone

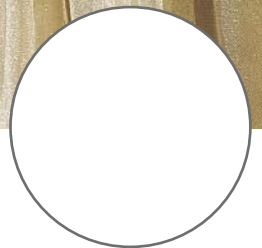
Color Combination: Analogous

Brightness: Bright

Mood: Crisp, Fresh



YourColorStyle.com



Dress Color: Buttercream

Who wears it best: Warm and Light

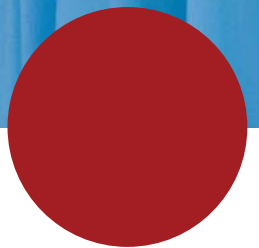
Color Combination: Split Complementary

Brightness: Bright

Mood: Happiness, Light



YourColorStyle.com



Dress Color: Sky Blue

Who wears it best: Bright

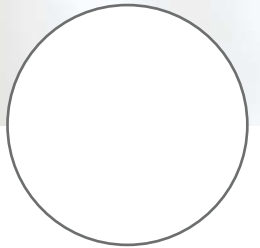
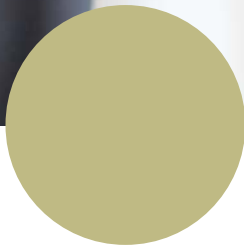
Color Combination: Quad

Brightness: Bright

Mood: Confident, Playful



YourColorStyle.com



Dress Color: Black

Who wears it best: Deep, Bright Cool & Deep

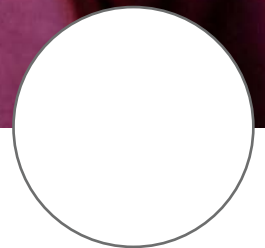
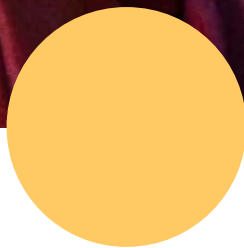
Color Combination: Monochromatic

Brightness: Bright

Mood: Formal, Elegant



YourColorStyle.com



Dress Color: Wine

Who wears it best: Medium to Deep

Color Combination: Split Complementary

Brightness: Bright

Mood: Harmony, Balance



YourColorStyle.com



Dress Color: Orange

Who wears it best: Bright and Warm

Color Combination: Analogous with a pop of Split Complementary (pink)

Brightness: Bright

Mood: Sweet, Refreshing



YourColorStyle.com



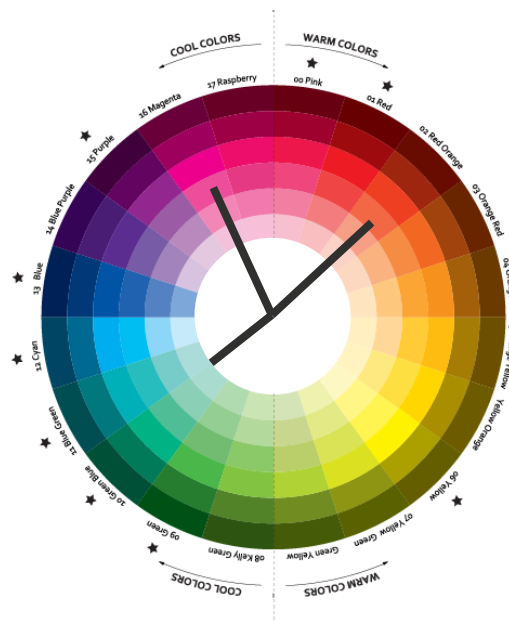
Dress Color: Mint Green

Who wears it best: Everyone

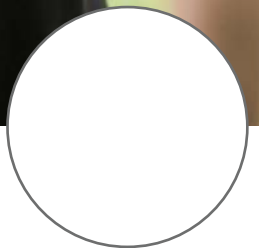
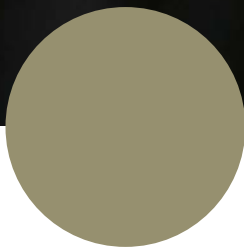
Color Combination: Complementary with a pop of Triad (pink)

Brightness: Bright

Mood: Fresh, Tropical



YourColorStyle.com



Dress Color: Black

Who wears it best: Deep, Bright Cool & Deep

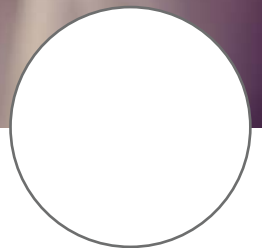
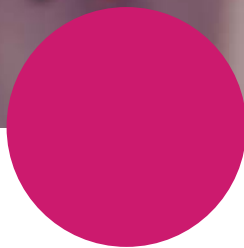
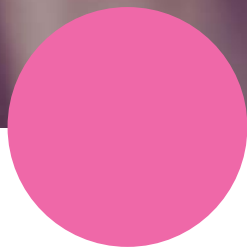
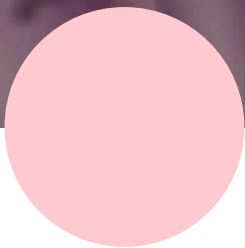
Color Combination: Split Complementary

Brightness: Bright

Mood: Formal, Elegant



YourColorStyle.com



Dress Color: Light Pink

Who wears it best: Cool Undertones


Color Combination: Analogous

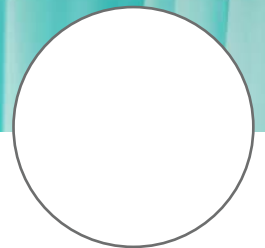
Brightness: Bright

Mood: Pretty, Romantic



YourColorStyle.com





Dress Color: Turquoise

Who wears it best: Bright

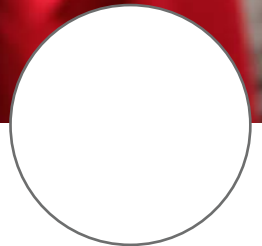
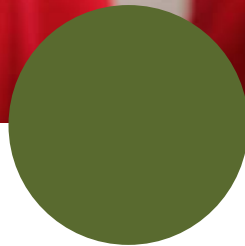
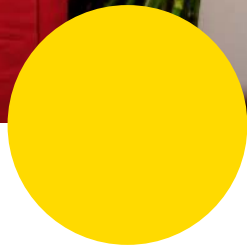
Color Combination: Triad with a pop of blue

Brightness: Bright

Mood: Pretty, Romantic



YourColorStyle.com



Dress Color: Bright Red

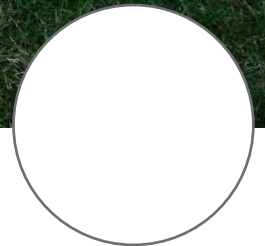
Who wears it best: Bright & Warm

Color Combination: Triad

Brightness: Bright

Mood: Passionate, Bold





Dress Color: Steel Grey and Navy Blue

Who wears it best: Everyone

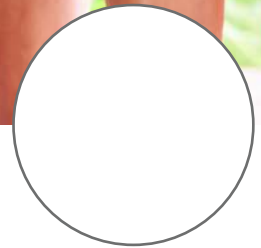
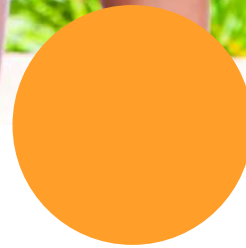
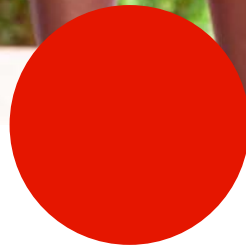
Color Combination: Triad

Brightness: Soft

Mood: Neutral, Loyal



YourColorStyle.com



Dress Color: Medium Grey

Who wears it best: Everyone

Color Combination: Analogous

Brightness: Bright

Mood: Fun, Joyful



YourColorStyle.com



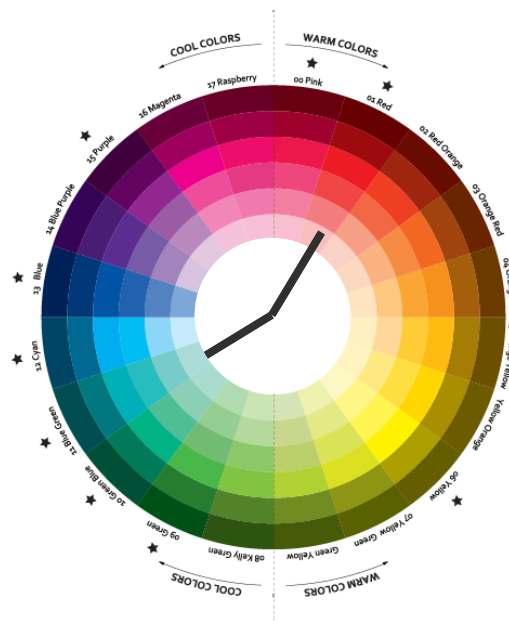
Dress Color: Icy Mint Green and Blush Pink

Who wears it best: Everyone

Color Combination: Split Complementary

Brightness: Bright

Mood: Romantic



YourColorStyle.com



Dress Color: Sky Blue

Who wears it best: Everyone

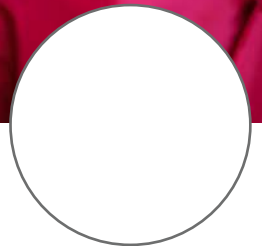
Color Combination: Split Complementary

Brightness: Bright

Mood: Free, Imaginative



YourColorStyle.com



Dress Color: Hot Pink

Who wears it best: Bright and Cool

Color Combination: Monochromatic

Brightness: Bright

Mood: Playful



YourColorStyle.com



Dress Color: True Yellow

Who wears it best: Everyone

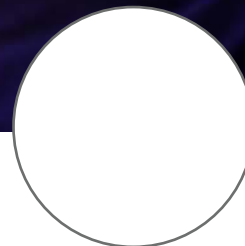
Color Combination: Complementary

Brightness: Bright

Mood: Joyful, Vibrant



YourColorStyle.com



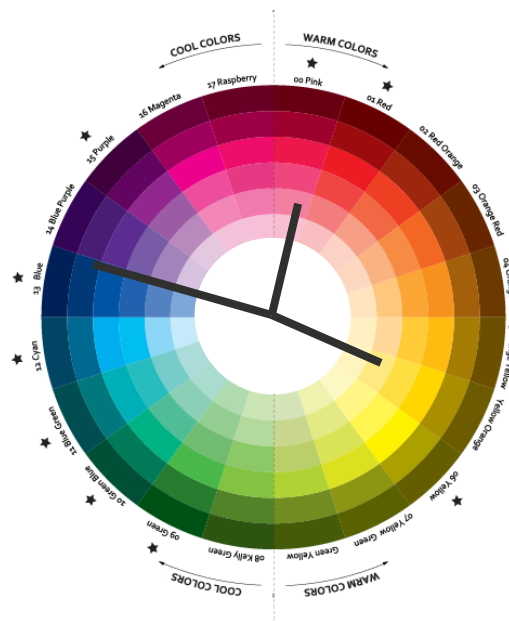
Dress Color: Blue-Purple

Who wears it best: Cool and Deep

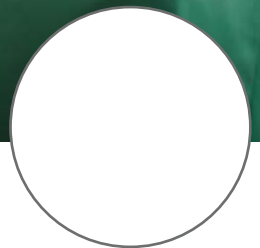
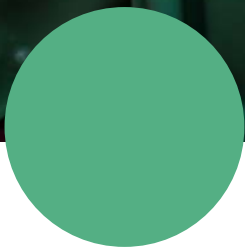
Color Combination: Complementary

Brightness: Bright

Mood: Regal, Powerful



YourColorStyle.com



Dress Color: Winter Green

Who wears it best: Everyone

Color Combination: Monochromatic with spot of triad

Brightness: Soft

Mood: Fresh, Hopeful



YourColorStyle.com



Dress Color: Winter Green

Who wears it best: Everyone

Color Combination: Monochromatic with spot of triad

Brightness: Soft

Mood: Fresh, Hopeful



YourColorStyle.com



Dress Color: Winter Green

Who wears it best: Everyone

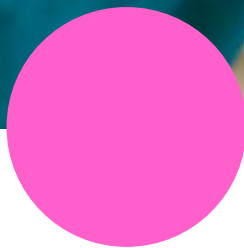
Color Combination: Monochromatic with spot of triad

Brightness: Soft

Mood: Fresh, Hopeful



YourColorStyle.com



Dress Color: Teal

Who wears it best: Everyone

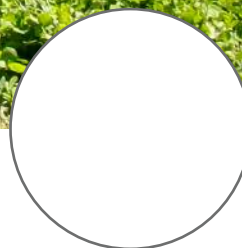
Color Combination: Triad

Brightness: Bright

Mood: Positive, Energy



YourColorStyle.com



Dress Color: Hot Pink

Who wears it best: Bright and Cool

Color Combination: Analogous evenly spaced between pink and yellow

Brightness: Bright

Mood: Playful, Bright



YourColorStyle.com

What Colors Look BEST On You?



<http://YourColorStyle.com/quiz>



YourColorStyle.com

About the Author

Jen Thoden is a bestselling author, speaker, entrepreneur, and mother-of-the-year (not). She is the international best selling author of "That's My Color: Discover Your 5 Signature Colors To Transform Your Life".

Her mission is to help women express their true authentic self through color and creativity. She is the founder of Your Color Style™, a proprietary color system that makes it easy for women to discover their best colors. Jen is the go-to expert on color, confidence and authenticity. Her expertise has been featured on Good Day PA, Inc.com, She Knows and Thrive Global. She lives in Ashburn, VA with her husband and 3 kids.



<https://JenThoden.com>



YourColorStyle.com